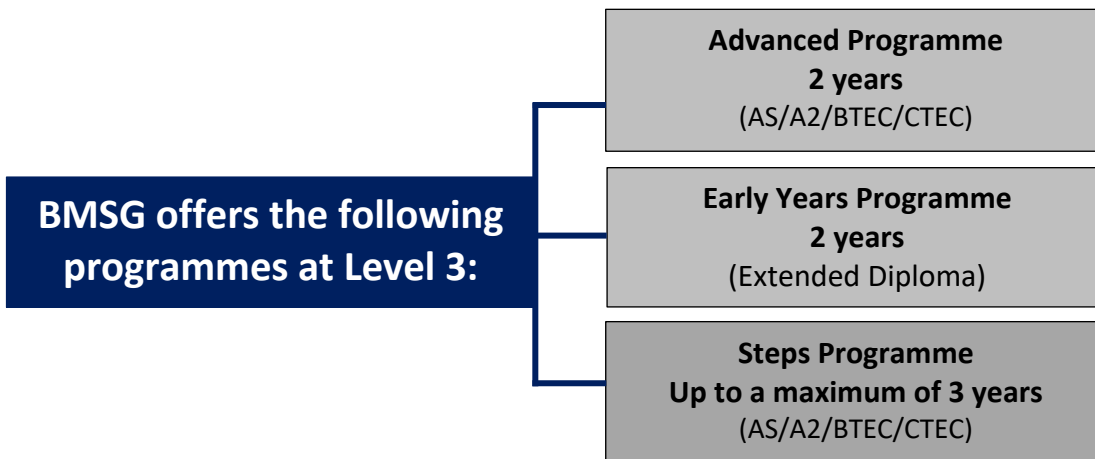


Studying at Post-16

In Belfast Model School for Girls we offer three distinct Learning Pathways at Post 16 to meet the needs of students.



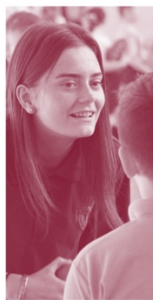
The assessment framework and content within each learning pathway is different, however, all pathways offer progression and can lead to Employment, Foundation Degrees, Further/Higher Education, Higher Level Apprenticeships and University.

To access a specific pathway, students must have achieved a minimum number of entry points, as well as specific grades in certain subjects.

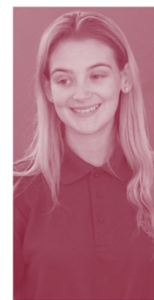
Students are assigned entry points based on their Level 2 outcomes to determine their academic profile. Points are awarded as follows:

Entry Points Table

Grade at GCSE	Score at GCSE	Other L2 Outcome	Points Value
A*	8/9	L2*Distinction	8
A	7	L2 Distinction	7
B	6	L2 Merit	6
C*	5	L2 Pass	5.5
C	4/5	L2 Pass	5
D	3	L1 Distinction	4
E	2	L1 Merit	3
F	1	L1 Pass	2
G			1
U	0	FAIL	0

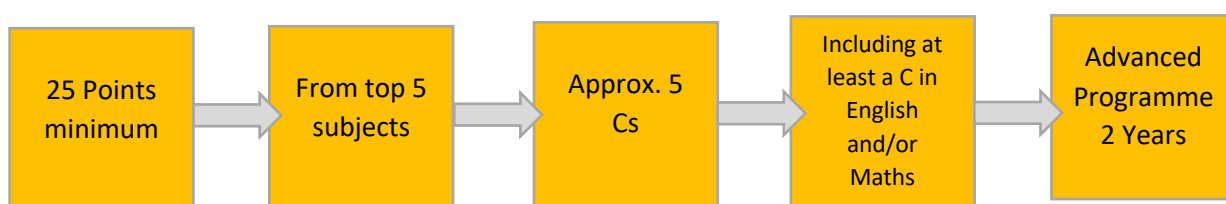


Post-16
2020-2022



Advanced Programme

Students need to achieve a minimum of 25 GCSE points or above from their **top 5** subjects (approx. 5Cs) one of which should be English and/or Maths.



- It is preferable that a Grade B is achieved at GCSE in the subjects being selected for study as part of the Advanced Programme.
- However for some subjects the GCSE entry grade requirement may be higher than a Grade B. Details of subject specific entry requirements can be found below:

Subject Specific Entry Requirements

<u>Subject</u>	<u>Minimum GCSE Grade required</u>
Art and Design	C in Art and Design
English Literature	C in English Literature combined with C in English Language OR B in English Language only
French	C in French
Geography	C in Geography C in English Language
Health and Life Science Single Award	C in SAS
Health and Life Science Double Award	BB in DAS, C in Maths
Health and Social Care	C in English Language
History	C in English Language
Performing Arts	C in English Language
Religious Studies	C in RE, C in English Language
Sociology	B in English Language

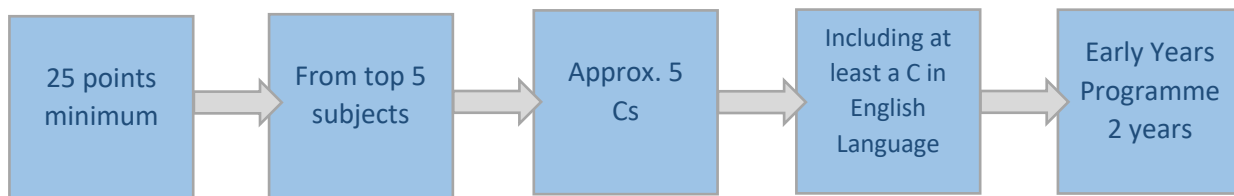
If a course is oversubscribed, then GCSE grades as detailed above will dictate entry into the subject.



Post-16 2020-2022

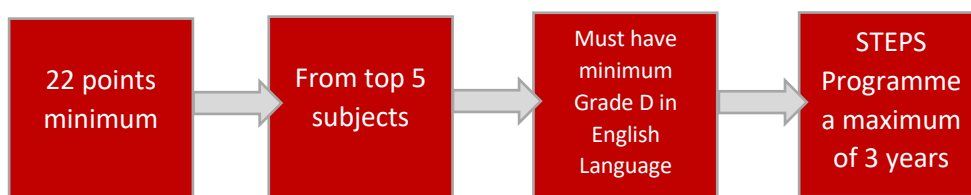
Early Years Programme

To gain access to this programme a student will need to achieve a minimum of 25 GCSE points (approx. 5 Cs) or above from their **top 5** subject areas. It would be preferable that a Grade C is achieved in GCSE English. Preference will be given to students who have completed the Access NI and CHSCT Vetting Process arranged through school.



STEPS Programme

To gain access to this programme a student will need to achieve a minimum of 22 GCSE points from 5 GCSE subjects. (These points will be subject to enhancement dependent on the profile of students applying). One of which must be a Grade D (minimum) in English Language.



Please note:

Provision for repeating GCSE English and/or Mathematics will only be made available to those students who have achieved no less than a Grade D.

Students accessing the Advanced Programme may not reduce the amount of courses they are studying, for example, if a student decides that they wish to reduce to studying two Level 3 subjects from three Level 3 subjects, they will no longer be able to continue in Post-16 at Belfast Model School for Girls.

