



**Belfast Model
School for Girls**
ACHIEVEMENT FOR ALL

Prospectus





MODEL

VISION

WELCOME

On behalf of the Governors, staff and students of the Belfast Model School for Girls, I would like to thank you for taking the time to read this prospectus.

Belfast Model School for Girls is an all-ability post-primary school for students aged 11 - 19 years old in North Belfast. Students learn and achieve in a culture of care, good discipline and tolerance, where young people of different cultures, abilities and backgrounds are educated together. Diverse identities are welcomed, respected and cherished under a common bond. We are a fully inclusive, Full Service Extended School, which offers a broad and balanced curriculum at each key stage, providing pathways to success for each child.

We are very proud of our school. Our aim is to provide the highest quality of educational opportunities for our students within *a friendly, supportive and caring environment*.

This prospectus will only give you a glimpse of what is special about the Belfast Model School for Girls and our £30 million facility and state-of-the-art resources. For more information, please visit our website and social media pages.

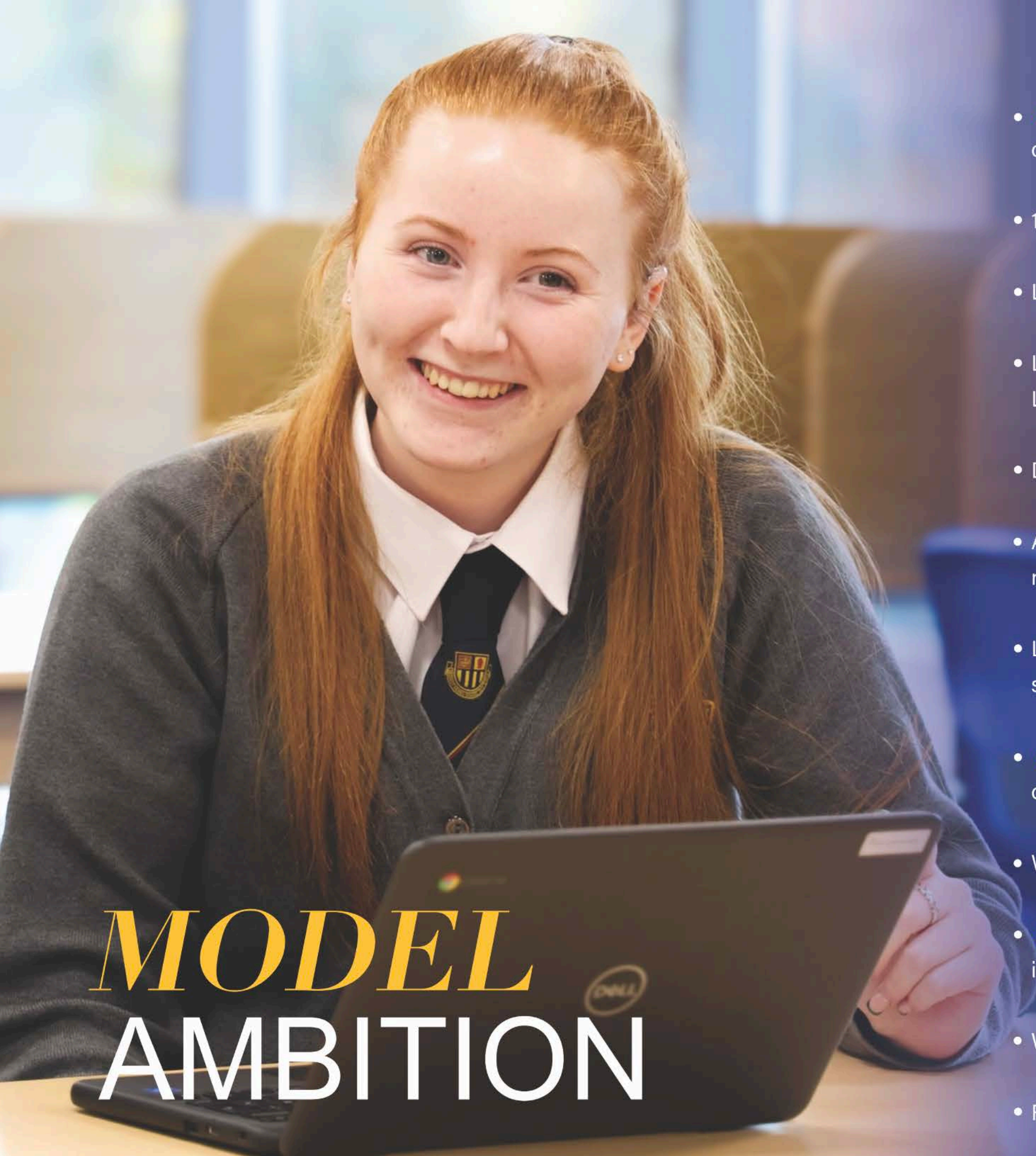
Ms P Stuart
Principal

Belfast Model School for Girls is a *vibrant, inclusive learning community*. We work in partnership with parents and the local and wider community. Wrapped within our culture of care, support and challenge, all are safe, happy, respected and valued.

We are committed to delivering progressive, personalised, high quality education and opportunities to empower all to become the very best that they can be: *Model* citizens; *Model* learners; *Model* professionals.

School Motto
Achievement for All





MODEL AMBITION

- An *all-ability, inclusive*, 11-19 post-primary school for girls, under the control of the Education Authority
- 1100+ students are drawn from a wide catchment area
- Long tradition of *academic excellence*
- Learning pathways and courses for *students of all abilities* - GCE A/AS Level, CTEC, BTEC, CACHE, GCSE, OCN NI
- Dedicated, well-qualified *specialist staff and high-quality teaching*
- A broad and balanced curriculum which is student-centred and needs-led
- Learning Support for students with additional learning needs in our state-of-the-art 'Learning Support Suite'
- A *caring environment* with excellent provision for pastoral support and careers guidance
- Wide range of *extra curricular* activities
- *Strong community* support and opportunities for extensive community involvement
- Work experience and valuable school-industry links
- Full Service Extended School

MODEL LEARNERS

We aim to ensure that your child has every opportunity to experience a wide variety of **quality** and **motivating learning experiences**, which will enable them to develop a love for learning, as well as an enquiring mind.

Each learning programme at KS3, KS4 and KS5 is designed to ensure that each student achieves success, fulfills their highest potential and be thoroughly prepared for the future.

Such experiences, across each Key Stage, enable students to gain knowledge and develop valuable skills which lead to the highest grades and outcomes in public examinations.

The majority of students return to continue their studies in Post-16, where learning pathways are carefully crafted to ensure students have access to suitable, relevant and engaging courses to ensure they are ready for work, college or university.

We offer individualised programmes of study:

GCSE, OCN NI, GCE Advanced Level, BTEC / CTEC or other vocational courses. Our curriculum on offer is continuously informed by labour market information.



Motivated **O**rganised **D**etermined **E**nthusiastic **L**ifelong **L**earners



SETTLING INTO *Year 8*

We understand how daunting the move from primary to post-primary can be, therefore we have in place a thorough and wide ranging transition programme to help your child settle in as smoothly, and as quickly, as possible.

Induction

Every September, Year 8 complete an Induction programme to get to know the other students in their Form Class and Form Tutor better. The students participate in a range of activities that encourage them to test their limits, solve problems and challenge each other, while learning new ways to communicate.

Halloween Disco

Just before October midterm break, a special 'spooky' evening is organised exclusively for Year 8 students. Year 8 and Post-16 girls are joined by staff to enjoy an evening of games, music, dance and treats! Fancy dress is encouraged, and there are lots of prizes to be won, as well as lots and lots of fun!

Learning Conference

In Term 2, your child will take part in the Year 8 'Learning Conference' where we invite past students in to talk about their career on the theme of 'Writing your Own Story'.

Peer Mentors - WBA - ABA

Our Peer Mentors, Wellbeing Ambassadors (WBA) and Anti-Bullying Ambassadors (ABA) are senior students who work with Year 8 students to help them settle into life at Belfast Model School for Girls.

Organisation of Students

In the Junior School (Years 8-10), students are placed in all-ability Form classes.

In the Senior School (Years 11 and 12) we operate a mixture of streamed and all-ability groupings to ensure students can realise their full potential.

Student Admission

Our school draws most of its students from partner primary schools in North Belfast. We also serve West and South Belfast and Newtownabbey.

We seek to draw students from a wide catchment area and will continue to respond to parental choice. Details of special transport arrangements are available on our school website.

In recent years, Year 8 has been oversubscribed. Prospective parents are advised to read the admissions criteria carefully, adding as much relevant information to the transfer form as possible.

KS3 Curriculum Guide

In Belfast Model School for Girls we understand that talent and capability are only the starting point. We believe that effort and determination are key to success.

We encourage our students to embrace a growth mindset. We know that intelligence can be developed. We help our students to become resilient and persistent learners who embrace challenges and who see failure as an opportunity to learn. We strive and work hard together to ensure 'Achievement for All'

In Year 8 - Year 10, classes are all-ability across the year group.

Year 8 - Year 10	Teaching Groups	Practical Sets	PE Sets
All classes all ability across the year group	Students are taught within their Form Class grouping	Students are mixed across the different teaching groups for practical subjects	Students are mixed across the different teaching groups for Physical Education
Access Group	Students are taught within the Access Group across the curriculum		

Students are taught in linear groups which are all-ability teaching groups. For practical subjects students are mixed in all-ability practical sets.

Access Group

THE **'ACCESS'**
GROUP WILL BE
A FORM GROUP

The Access Group is made up of those students who we know, for a wide variety of reasons, will need most support with their transfer to post-primary school. This group will have the same specialist teacher for a significant part of their week - for English, Maths, Drama, RE, Literacy and Numeracy - with a focus on the knowledge, skills, competencies and wellbeing needs required to be successful at post-primary school.

Year 8 - Year 10 study the following subjects:

Art **Drama** English **Geography** Home Economics
History Digital Technologies **French***
Learning for Life and Work **Maths** Music
Physical Education Religious Education
Science Spanish* **Technology** Careers
(Year 10)

*Please Note:

Students in the Access Group will have additional English literacy time in place of a Modern Foreign Language.

Form Groups

- The Form Tutor is a parent's first point of contact
- Form Groups and Teaching Groups are the same for most subjects
- Form Groups and Teaching Groups are all-ability and follow the same learning programme



MODEL JOURNEY



**Belfast Model
School for Girls**
ACHIEVEMENT FOR ALL

KS5 Post 16 Years 13 and 14

Optional Subjects Level 3:

- Art, Craft and Design
- Business Studies
- Children's Play, Learning and Development
- Computer Science
- Double Award Life and Health Sciences

- English Literature
- Environmental Technology
- Geography
- Government and Politics
- Health and Social Care
- History
- ICT
- Mathematics

- Performing Arts
- Religious Studies
- Single Award Life and Health Sciences
- Sociology
- Spanish
- Sports Studies
- Travel and Tourism

Non-Exam:

- Careers
- Enrichment Programme

- Broad and balanced curriculum
- Entitlement framework compliant
- Individual pathways

KS4 Senior School Years 11 and 12

Core Subjects:

- English Language
- ICT or Computer Science or Business Communication
- Mathematics
- Personal Success and Wellbeing or King's Trust

- Broad and balanced curriculum
- Entitlement framework compliant
- Individual pathways

Non-Exam:

- Careers
- Learning for Life and Work
- Physical Education
- Religious Studies

Optional Subjects Level 2:

- Art and Design
- Business Studies
- Childcare
- Child Development
- Construction and the Built Environment
- Drama
- Contemporary Crafts

- English Literature
- French/Spanish
- Geography
- Government and Politics
- Health and Social Care
- History
- Hospitality
- Leisure, Travel and Tourism

- Music
- Performing Arts
- Religious Education
- Science (Single and Double Award)
- Sociology
- Sports Studies
- Catering
- Care in the Environment

KS3 Junior School Years 8, 9 and 10

Numeracy, literacy and ICT skills acquired, developed and assessed across the curriculum.

Personal capabilities and thinking skills acquired, developed and assessed across the curriculum.

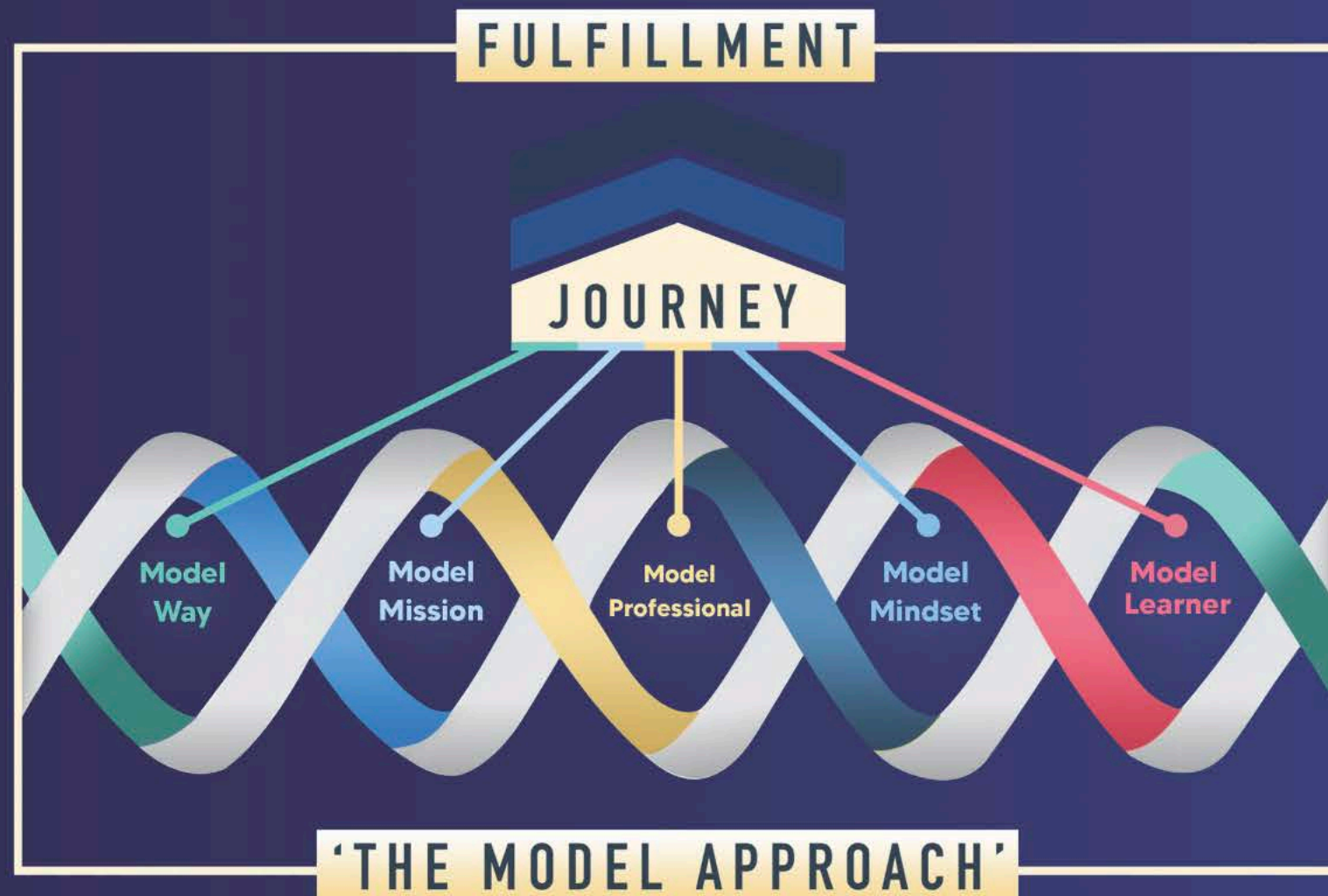
Subjects Studied:

- Art and Design
- Careers
- Drama
- English
- Geography
- History
- Home Economics
- ICT

- Learning for Life and Work
- Mathematics
- French or Spanish
- Music
- Physical Education
- Religious Education
- Science
- Technology and Design

PRIMARY SCHOOL TRANSITION PROGRAMME

MODEL WAY



Ready.

- Take pride in your uniform and be well equipped for school.
- Remain focused on learning in the classroom.

Respectful.

- Be polite and respectful to everyone.
- Take responsibility for your own actions.

Safe.

- Move around the school in a quiet, responsible way.
- Take pride in our school environment.



BEL
ACH

I
EVE.
EVE.

I CAN.
I WILL.



MODEL
CARE

Student Wellbeing

The **Vice Principal and the Assistant Principal: Learning Support and Student Wellbeing** work collaboratively with the teams of Leaders of Learning, Assistant Leaders of Learning and Form Tutors, sharing ideas, skills and talents, and contribute to the effective functioning of a highly motivated, cohesive team with a shared vision for the future of Belfast Model School for Girls. Staff have a shared sense of common purpose to ensure that the young people in the school experience the highest quality of learning provision from a highly skilled, professional team of teachers and support staff, within a supportive, encouraging and disciplined environment.



- Leaders of Learning - provide support and also monitor attendance, behaviour and academic progress
- Form Tutors deal with day-to-day matters
- A range of counselling and youth services is available to support students, coordinated through our Full Service Extended School provision
- Full health provision and support through our specialist Student Wellbeing Hub
- Teddy - our school wellbeing dog

We promise to provide:

- A safe, well-ordered, fun, caring, learning environment
- Programmes of study suitable for each student's age, aptitude and ability
- Regular information about school activities, academic progress, and courses on offer at each Key Stage
- Annual face-to-face consultation meetings (parent-teacher interviews)
- Early identification of underachievement or other issues causing concern and requiring support in terms of relationships, behaviour and wellbeing
- An effective system of dealing with concerns with access to the Principal and other members of the Senior Leadership Team

Learning Support

- Many students benefit from a range of support services provided by the Learning Support Team
- Individual programmes for students returning after prolonged absence or other identified needs
- Peer tutor support
- Literacy and Numeracy support at Key Stage 3
- GCSE support
- Learning Support Assistant

Designated Teachers:



Mrs J Clarke



Mrs G Houston



Ms P Stuart

MODEL SUPPORT



Safeguarding & Child Protection

We make every effort to ensure that our students are protected and kept safe from harm. We do this by:

- Giving parents, students and staff information about what we do and what they can expect from us
- Making sure that our staff and personnel from outside agencies are carefully selected, trained and supervised
- Letting parents and children know how to voice and report their concerns
- A dedicated safeguarding team of designated teachers for Safeguarding and Child Protection
- Access to, and support from, external partners and agencies



Extra Curricular Activities

Aerobics **Fitness Training** Football **Athletics**
Gymnastics **Badminton** Hockey **Basketball**
Running Club **Tennis** Cookery Club **Netball**
Trampolining **Dance** STEM Club
Duke of Edinburgh Award Scheme Choirs
Orchestra Guitar Club **Ensembles**
Debating Society **Theatre visits** Art Gallery
visits **Scripture Union** Public Speaking
Computer and Coding Club Residentials
Drama Club Breakfast Club **Homework Club**

MODEL BRILLIANCE

Music Tuition

Singing, woodwind, brass, strings and piano lessons are available during and after school and are open to all Year 8 students, no previous experience is required. More information will be provided in September.



MODEL RESPECT

MODEL SUCCESS



School Aims

Quality Learning and Teaching

- To provide a relevant, stimulating learning experience that **develops** an enquiring mind in all students and a motivation to learn
- To develop each student's **academic abilities**, and other gifts and talents, to the fullest extent
- To employ strategies to ensure that each student, regardless of their starting point, attains the **highest possible outcomes** required to secure their future economic and personal wellbeing
- To utilise methodologies and research which enhance learning and teaching in order to develop the **potential** of students and our wider community
- To encourage each student to develop a positive attitude to continuing education and training, and lifelong learning

Skills for Life and Employability

- To equip all students with the transferable and transversal skills required in a changing job market
- To encourage and develop independence, self-confidence, self-esteem, self-discipline, and resilience for learning
- To develop students' awareness and understanding of, and respect for; themselves, others within the school and people in our local, national and international community
- To enable students to make a positive contribution to their community

Culture, Character and Care for Learning

- To promote the spiritual, moral, intellectual, cultural and physical development and growth of each student
- To provide a safe, caring and stable environment where each student is encouraged to make a positive contribution to the school and wider community
- To ensure that all students and their families, promote and know, the value and impact of excellent attendance and punctuality
- To ensure the highest standards of personal presentation and behaviour
- To foster the highest possible levels of parental engagement and support

MODEL



FUTURES

Preparation for life after school

The school seeks to provide a comprehensive programme of careers education, information and guidance which equips students with the skills required for the world of work.

Industrial Awareness Conferences

Industrial awareness conferences enable Year 12 students to develop their interview skills with the help of advisers from a wide range of occupational areas.

Work Shadowing

Work shadowing is organised for Year 13 students undertaking A/AS level courses to give them insight into professional roles and responsibilities.

Work Experience

Work experience is offered to all Year 12 students and Post-16 students.

Industrial Visits

Industrial visits provide students with experience of the real working environment and enhance their understanding of industry and production.

Individual Careers Interviews

Individual careers interviews with Careers Officers (Training and Employment Agency) are organised for all Year 10, Year 12 and Post-16 students.

Leadership

In Belfast Model School for Girls, we offer students many leadership roles and opportunities.

- Senior Student Leadership Team (SSLT)
- Peer Mentors
- Wellbeing and Anti-bullying Ambassadors
- Attendance Ambassadors
- Sports Leaders
- QUB Pathways Programme
- QUB Junior and Senior Academy Programme
- UU Schools Outreach Academy
- Form Class Captain/Vice Captain
- Office Assistants
- Student Council
- STEM Ambassadors



MODEL FACILITIES

Community Centre

Belfast Model School for Girls



Welcome to
Belfast Model
School
for Girls

The Belfast Model School for Girls has modern educational, sporting, creative, performing and community facilities which are second to none.

ICT Provision

- Ten PC suites
- Three Apple Mac suites
- More than 600 computers
- Portable iPads, laptops and Chromebooks

Sporting facilities

- Leisure centre sized sports hall
Gymnasium
- Two polymeric hockey pitches
- A polymeric athletics track, with netball court
- Three tennis courts
- Dance studio with sound system and performance mirror
- Fitness suite with treadmills, exercise bicycles, rowing machines and weights

Performing Arts provision in multi-purpose hall

- Performing Arts theatre, with tiered, retractable seating and professional quality sound and lighting
- Sound and lighting control booth
- Props store
- Green room, dressing room and showers
- Interlinked recording studio
- Drama studio, with stage curtains, lighting and sound system

Education facilities

- Specially designed Music Department, with rock room, orchestra room, Apple Mac suite, and recording studio
- Specially designed Art Department with Apple Mac suite, Sixth Form room and three classrooms
- Science and Technology with seven Science labs and extensive Design and Technology work areas
- Large Home Economics suites
- Extensive Learning Zone, with tutorial, teaching, reading, counselling and resource rooms
- State-of-the-art digital facilities and resources
- Supervised Post-16 Study Area
- Post-16 Common Room



Our MODEL FAMILY



Belfast Model School for Girls

35 Dunowen Gardens

Belfast

BT14 6NQ

Tel: 028 90 718111

Email: info@girlsmodel.belfast.ni.sch.uk

Principal:

Ms P Stuart – B.Ed, PGCE PQH NI, M. Ed

www.belfastgms.org



Scan for more info

